



Mrs. Cecil D. Moreman



Mrs. Jane C. Walker

Founders

Mrs. Cecil D. Moreman

Mrs. Jane C. Walker



LEE COUNTY

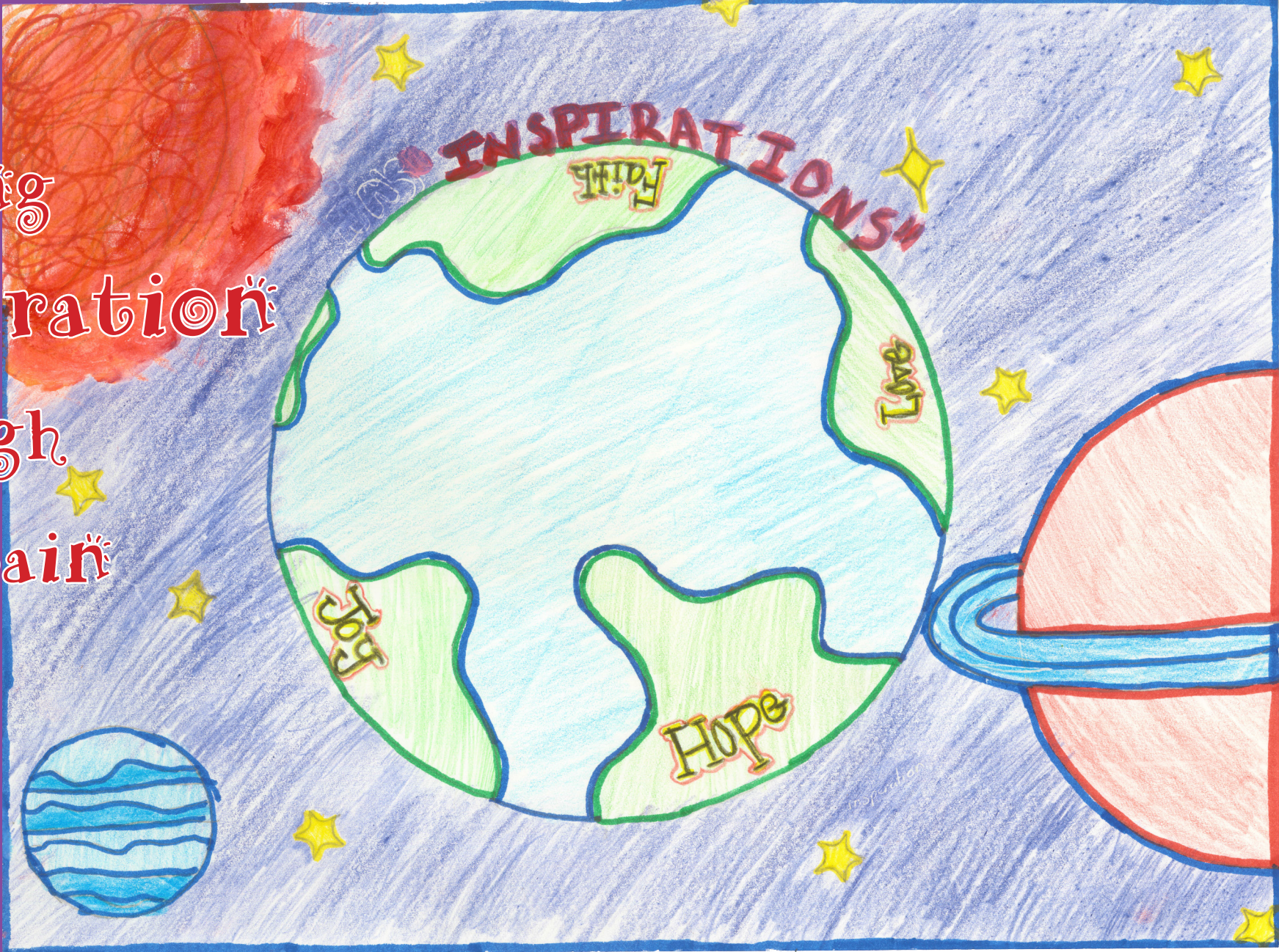
Youth Development Center

1973 - 2020

47 Years of
Caring Excellence

www.lcydc.org

Finding
Inspiration
Through
The Rain



Artwork by
Tayshawn Cooley



BOARD OF DIRECTORS

- **Dr. Anne Penney**
President
City of Auburn
- **Sheriff Jay Jones**
Immediate Past President
City of Auburn
- **Kenneth Burton**
Vice-President
City of Opelika
- **Dianne Carlton**
Secretary
Lee County
- **Robert Smith**
Treasurer
Auburn Bank
- **George Ervin**
Lee County
- **Richard Key, II**
Lee County
- **Larry Patterson**
Lee County
- **Steve Pelham**
City of Auburn
- **Sharlene McDaniel**
City of Auburn
- **Henrietta Thomas**
City of Opelika
- **Richard Moreman, Jr.**
City of Opelika
- **James Q. Smith**
City of Opelika

ADVISORY COMMITTEE

Lisa Kelley
*Lee County Department
of Human Resources*

Honorable Mike Fellows
Lee County Family Court

A Place of Service...

Offering hope to Children and families... Strengthening communities

OUR MISSION OUR CORE VALUES

- **Building and valuing a committed, compassionate and enthusiastic team**
- **Honoring tradition while inviting and embracing diversity, change and growth**
- **Providing a comprehensive range of services designed to improve the quality of life for children, families and our community**



Affiliations



CLINICAL AND COMMUNITY SERVICES

- Individual, Group and Family Counseling
- Intensive In-Home Services
- Diagnosis and Evaluation
- Professional Development
- Co-Parenting Experience
- Crisis Assessments
- Project Uplift

ESSENTIAL SERVICES

- Medical Clinic
- Psychiatric Clinic
- Surveillance and Security
- Food and Nutrition
- Buildings and Grounds

RESIDENTIAL

- Regional Detention
- ★ • Journeys Intensive Residential
- Transitional Living Home
- Independent Living Program
- Passages Moderate Residential
- Voyages Female Residential
- Therapeutic Foster Families Services

★ On Sabbatical: Jan. 2020-Sept. 2020

ADMINISTRATIVE SERVICES

- Board of Directors Governance
- Chief Executive Operations
- Financial and Purchasing Services
- Employment & Payroll Services
- Human Resource Management
- Risk Reduction & Quality Improvement

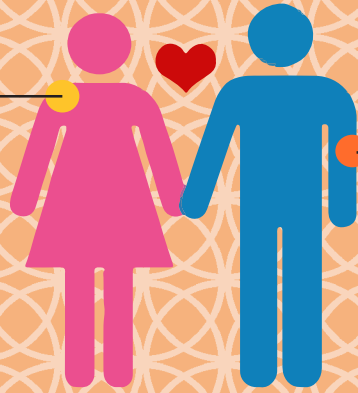


EDUCATIONAL SERVICES

- ★ • Journeys Classrooms
- Passages Classrooms
- Voyages Classroom
- Alternative Day School
- Art & Fitness Education
- Career & Technical Education

★ On Sabbatical

FEMALES
55%



MALES
45%

By Race

African American	53%
Caucasian	42%
Hispanic/Other	5%

1,334 Individuals Impacted

R.D. Lane Regional Detention Center of East Alabama.....	288
Voyages.....	62
Intensive In-Home Services (IIHS).....	319
Project Uplift.....	361
TFC.....	25
Journeys*.....	22
Passages.....	64
TLP.....	11
ILP.....	2
TransParenting.....	148
Chanticleer Day School.....	32

*Service Sabbatical as of 12/30/2019



FROM OUR PRESIDENT'S PEN

Dr. Anne Penney

The spectacular artwork created by our students and featured throughout this annual report tells the story of FY 2020 far better than I will. As the artwork on the cover suggests, the entire world has been impacted by the events of this past year. We could not have known when this fiscal year began in the fall of 2019 all that would be faced, encountered and endured beginning with the winter of 2020 and continuing to this very day. Working together, we have found inspiration and hope through the rains and storms of the global pandemic.

The Board of Directors has always been proud of Mrs. Cooper and of those mission-minded employees who work diligently year-round to meet the needs of those who need us. However we are especially pleased with the efforts of those committed staff, stakeholders and partners who pulled together and persevered through a year like no other. Our sincere appreciation to those who have inspired all of us.

Anne Penney, Ed.D.

President, Board of Directors





FROM OUR DIRECTOR'S DEST

Laura J. Cooper, Executive Director

As you turn the pages of our Fiscal Year 2020 Annual Report, our goal is that you find reasons to be inspired. Beginning with the artwork completed by the amazing young people that we have the privilege of serving – moving to our service center numbers – on to our finances – and finally photos dispersed throughout detailing days in the lives of our people and our programs.

The dictionary defines inspiration as “the process of being mentally stimulated to do or feel something...”. A popular girl group from the 1960’s named The Sweet Inspirations had lyrics in their signature song that went “...and if I’m out in the rain baby, and in a bad situation, you just know I reach back in my mind and there I find your sweet inspiration...”. During a year experienced like no other in our agency’s forty-seven year history, we found inspiration on even the gloomiest of days.

We were inspired by our Board of Directors who never wavered in support of our team members and our mission. Inspiration came from our community and statewide partners and stakeholders who provided us with goods, services and all manner of good counsel and strong guidance. We would be remiss if we failed to highlight a key partnership with East Alabama Medical Center which served our clients and staff so well throughout last year. And for sure we were inspired by all agency team members and contractors who continually showed up ready to care for the needs of our clients even in the midst of personal uncertainty and all manner of pressure at their own front doors.

However I am sure that I speak from all when I say that our sweetest inspirations came from the children, teens, young adults and families who trusted us to serve them when no one could say - with any degree of certainty - what the next day would bring. These special individuals “mentally stimulated” so many of us to do our best and give our best selves to those who had placed their confidence in us.

We are thankful, grateful and blessed for safe passage “through the rain” which fell on us during fiscal year 2020. We will ever look back in our minds and find inspiration from all those encountered on this journey and served in this year that will forever be etched in the sands of time.

Laura J. Cooper, LBSW, M.Ed.

Executive Director

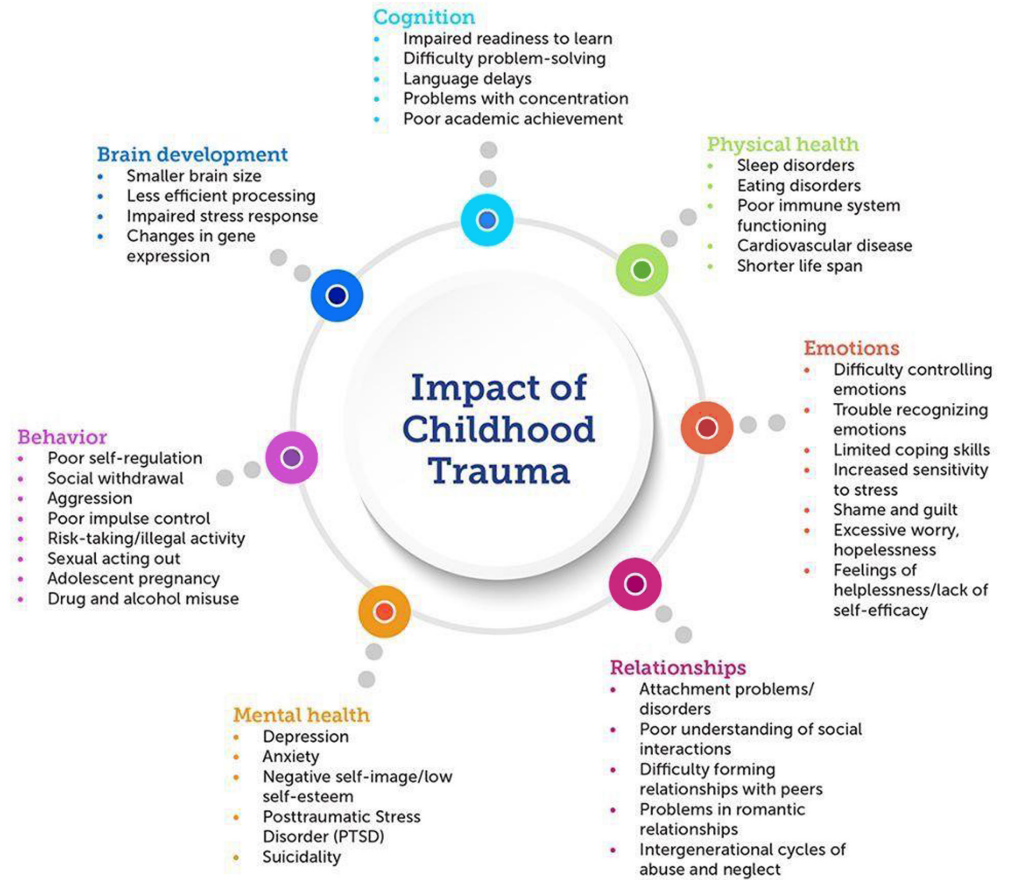


Human Rights, Risk and Quality Improvement

Protecting, safeguarding and continually reviewing the rights which the clients under our care are entitled to is a serious undertaking. We have internal and external stakeholders to assist us with monthly meetings and with making improvement recommendations. Keeping family members engaged in their children's care plans is essential. As is reviewing suggestions, grievances, incidents and corrective action plans. Data is collected not just to review but to inform and improve the quality of our service provision agency wide.



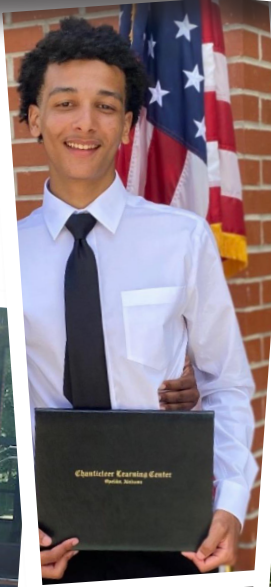
Impact of Childhood Trauma



From the agency-wide PBIS-NCI (Positive Behavior Intervention & Support - Non-Violent Crisis Intervention) in-person training to the adoption of the CPS (Collaborative Proactive Solutions) Program Model, LCYDC has made adverse childhood experiences and childhood trauma a hallmark of all approaches to our service provision. Primary and secondary trauma must be acknowledged and woven into our culture of care if we are to make the impact that our persons served require.

Education Services

With a mission of “Awakening a Yearning for Learning to Last a Lifetime” our Cognia accredited Chanticleer Learning Center never let the global pandemic slow them down. Indeed our year-round Learning Center did not close at any point during the Covid-19 shutdown. Chanticleer’s Graduation Ceremony held in May 2019 was especially special.



Cafeteria Services

Providing three balanced meals and snacks every day, seven days a week, three-hundred sixty-five days a year, is no small task. Preparing these meals to meet specific dietary needs and restrictions while trying to appeal to the appetites of a mostly teen population is a challenge that the Cafeteria Team faces daily. A place that feeds not only body, but also nurtures the soul.



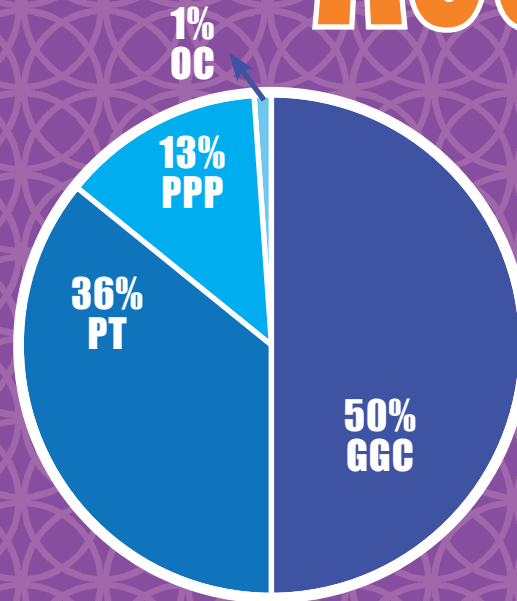
Clinical Services

Focusing on the socio/emotional/behavioral wellbeing of persons served requires deep study, targeted training, a steady hand and a compassionate heart. Our Clinical Services team partners with a contracted, licensed psychologist and with Auburn University Ph.D. and Master’s level students to provide wide-ranging care including individual, group and family counseling sessions, crisis assessments, diagnosis and evaluation and ongoing collaboration with all stakeholders.

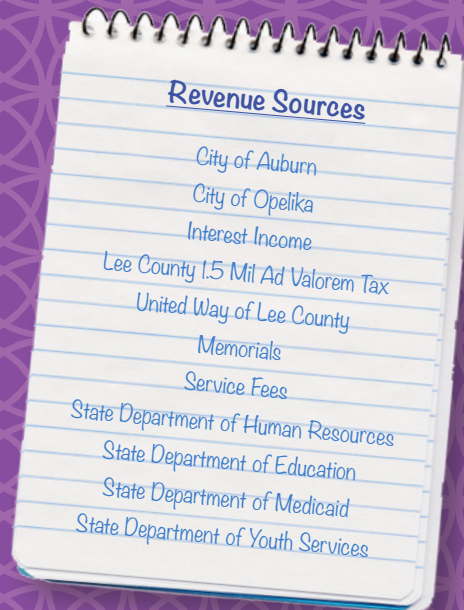
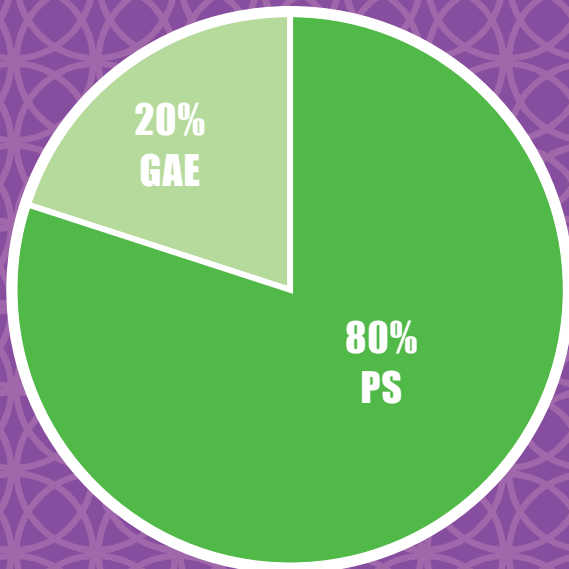


Basis of Accounting

FY 2020 REVENUE SOURCES		
	FISCAL YEAR 2020	
Government Grants and Contracts (GGC)	\$4,601,758	50%
Property Taxes (PT)	\$3,346,723	36%
Payroll Protection Plan	\$1,250,000	13%
United Way Cities of Auburn and Opelika and Other Contributions (OC)	\$144,222	1%
Total	9,342,703	100%



FY 2020 EXPENSE SOURCES		
	FISCAL YEAR 2020	
Program Services (PS)	\$7,512,468	80%
General & Administration Expenses (GAE)	\$1,021,107	20%
Total	\$8,533,575	100%



LCYDC maintains its accounts and prepares financial statements on the accrual basis of accounting. Income is recognized in the period measurable rather than when collected, and expenses are recognized in the period incurred, rather than when the obligations are paid.

The audit of LCYDC's financial records for fiscal year 2020 was conducted by Himmelwright, Huguley, Boles, CPA Firm – Opelika, Alabama in complete accordance with U.S. generally accepted auditing standards.

Partners & People



Grooving at The Gogue



Mr. Woodall and Graduate



Our New Deputy Director Birmingham



Recruiting Foster Families

Central Administration

Small in number...large in scope. Our central office team members are few but handles the company's expansive accounts payable, accounts receivable, employment and benefits, requisition and inventory and overall customer service needs for our vendors, stakeholders, employees and contractors. Our goal is to resolve issues and to be of service before, during and long after traditional office hours.



Artwork by
Ebony Brazelton

Medical & Psychiatric Services

Caring for the medical, health and wellness needs of persons served is a key service area. We are fortunate to partner with East Alabama Medical Center and to contract with a Child Psychiatrist so that we can convene weekly medical and psychiatric clinics. Our Med Services team members work long hours – weekends and holidays included – to be sure that any emergency or ongoing medical, dental, optical or other wellness concern is addressed in a timely manner.



Security, Surveillance, Building, Transportation & Grounds

Whew! This department literally never sleeps – their many and varied jobs and tasks are truly never ending. In addition to continual situational awareness and anticipating safety concerns, these staff members must be on the scene when issues of any type escalate to the point of a risk concern. With more than two hundred surveillance cameras and security devices campus-wide, these team members work closely with all agency staff and with external partners to keep our clients, guests, buildings, grounds and our auto fleet safe and welcoming.



Voyages

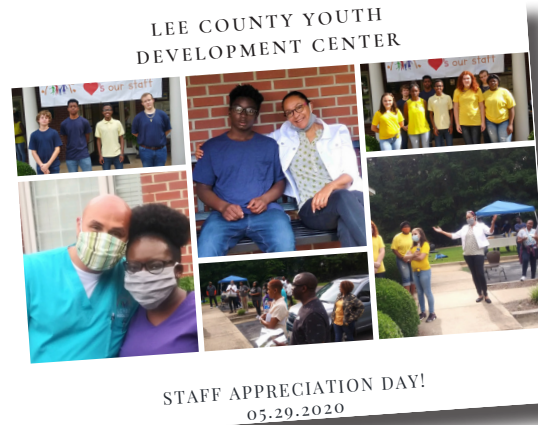
Voyages is a residential treatment facility serving up to eight young women who have been committed to care by the Department of Youth Services. Average stay is between 45 and 90 days.



Overall Served 62	
Shelby: 3	St. Clair: 3
Jefferson: 18	Calhoun: 3
Chambers: 3	Tuscaloosa: 2
DeKalb: 1	Blount: 2
Covington: 1	Dale: 1
Russell: 2	Geneva: 3
Baldwin: 6	Mobile: 4
Talladega: 3	Houston: 2
Montgomery: 4	Tallapoosa: 1
Perry: 1	
Racial & Ethnic Characteristics:	
African American	40
Caucasian	19
Bi-Racial	2
Hispanic/Other	1
Gender:	
Females: 62	Males: 0

Passages

Passages is a Moderate Residential Treatment Service Center that can serve up to 34 males and females, ages 11 to 17. Days for these young people are filled with school, counseling, dorm life, living and coping skill training, family engagement, recreational and typical teen activities.



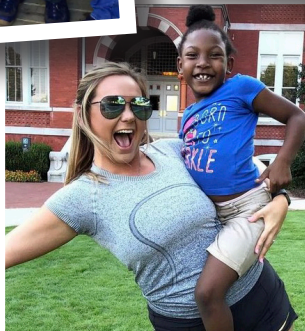
Overall Served 64	
Lee: 8	Jefferson: 16
Pike: 1	Montgomery: 9
Madison: 4	Cullman: 4
Calhoun: 1	Escambia: 2
St. Clair: 1	Russell: 3
Talladega: 1	Houston: 2
Mobile: 4	Colbert: 1
Lawrence: 1	Walker: 1
Limestone: 1	Tuscaloosa: 3
Franklin: 1	
Racial & Ethnic Characteristics:	
African American	31
Caucasian	29
Bi-Racial	3
Hispanic/Other	1
Gender:	
Females: 39	Males: 25



Dr. Bernard Lafayette's Kingian Non-violent Seminar at AU

Project Uplift

A child... a friend... endless possibilities. Although the pandemic interrupted plans and goals for this year, our Auburn University student volunteers still managed to uplift the lives of hundreds of young people here in Lee County. Project Uplift relocated to Haley Center where they are at the heart of the sprawling and bustling university campus.



Number of Clients Served 361	
Total # of Lee County Clients Served (LC)	361
Racial & Ethnic Characteristics:	
African American	318
Caucasian	16
Hispanic	21
Asian	1
Bi-racial	5
Gender:	
Males: 176	Females: 185

Intensive In-Home Services

IIHS works collaboratively with families within a seven-county area. The families are experiencing instabilities which – if not addressed – might lead to out-of-home care for the children served. Staff found creative ways to stay connected to families and meet needs.

Number of Clients Served	
Total Adults: 106	Total Children: 213
Racial & Ethnic Characteristics: (Based on Family)	
African American	39
Caucasian	54
Hispanic/Latino	3
Bi-Racial	2
Other	3
Gender:	
Adult Males: 10	Adult Females: 96
Children Males: 100	Children Females: 113



Independent Living Program

Young adults who have completed high school and are earning a living still need support. ILP assists these young people with securing an apartment and providing help and oversight until they are ready to fly free.



Cancer Walk with SEE



Kids just wanna have fun

Overall Served 2	
Macon: 1	Chilton: 1
Racial & Ethnic Characteristics:	
African American	2
Caucasian	0
Hispanic/Latino	0
Bi-Racial	0
Other/Unknown	0
Gender:	
Females: 2	Males: 0

Transitional Living Home

Our TLP home is a refuge for older teens and young adults who need a safe launching pad into adulthood. Their home bustles with public school, junior college, extra-curricular and part-time job activities. Their Golden-Doodle, Hailey, keeps staff and kids on their toes!

Overall Served 11	
Lee: 3	Macon: 1
Jefferson: 3	Tuscaloosa: 2
Colvert: 1	Chilton: 1
Racial & Ethnic Characteristics:	
African American	5
Caucasian	3
Hispanic/Latino	1
Bi-Racial	2
Gender:	
Females: 4	Males: 7

3:47 📶 🔋

Elizabeth White 🔵
Just now · 🌐

#INSPIRED: A moment of kindness in the parking lot of the Opelika Moe's will make you smile. Please, help me find out this young worker's name!

Amy Wolters shared: There is so much negativity in this world, but tonight we witnessed first hand the kindness out there. Our family ate dinner at Moe's Southwest Grill. This young man was taking out the trash and held the door open for an older man to walk out. You could tell this gentleman could use extra help to get to the car. Instead of returning to his job, he chose to walk this man out to his car. He slowly walked and held a conversation with the gentlemen for about 10 minutes as he safely shuffled to the car. The worker then came inside to find the gentleman's wife, who was still eating and explained where her husband was. He then escorted her to the bathroom and waited for her outside to walk her to her car and husband. The worker continued to help them until they both were safely in the car. All of this was done with the biggest smile on his face. It was so wonderful to watch someone go above and beyond and offer help to someone they don't even know. I don't know this young man or elderly couple. But I am thankful to have witnessed such kindness tonight. If you know who he is, please tell him his love, kindness, and heart do not go unnoticed!

🏠 🛒 👤 📄 🔔 ☰



Artwork by Kay Harris

Therapeutic Foster Care

TFC strives to train and license individuals who are willing to take a journey of a lifetime. Foster parents open their arms and their homes to infants, toddlers, children and teens who need shelter and care from the storms of life.



Overall Served 25

Lee: 1	Montgomery: 4
Tallapoosa: 1	Madison: 1
Barbour: 1	Houston: 3
Etowah: 2	Chambers: 1
Calhoun: 4	Baldwin: 1
Shelby: 2	Mobile: 2
Tuscaloosa: 1	Lawrence: 1

Racial & Ethnic Characteristics:	
African American	12
Caucasian	12
Hispanic/Other	1

Gender:	
Females: 11	Males: 14

East Alabama Regional Detention

Our detention services serves young juveniles who are involved with the legal or family court systems. A secure facility with the capacity to serve up to 32 young people.



Overall Served 288	
Lee: 95	Randolph: 32
Tallapoosa: 12	Macon: 7
Bullock: 1	Russell: 51
Coosa: 13	Chambers: 62
Clay: 1	Pike: 14
Racial & Ethnic Characteristics:	
African American	189
Caucasian	97
Hispanic/Other	2
Gender:	
Females: 37	Males: 251



Artwork by Lexie King



Artwork by Connie Johnson